



Sherwood Park Alberta

\$299,900

IMMEDIATE POSSESSION! PRIDE OF OWNERSHIP! BUDGET FRIENDLY! This 1432 sq ft 3 bed, 2.5 bath townhouse has been refreshed & ready for a new owner! Fresh paint, move in ready carpets, & plenty of room to grow. Single attached garage leads to the mudroom & closet. Second level features an open concept living space consisting of a spacious family room, massive island with ample cupboards, & generous dining room for a large table, & balcony for BBQs. 2 pce bath too! Upstairs brings 3 bedrooms, including the primary bedroom w/ 4 pce ensuite & walk in closet. Separate top level balcony for summer hangouts with your favourite book & glass of wine! Basement is unfinished but room for another bedroom or rec room / play space. Condo fees of \$317.47 cover exterior maintenance, snow removal, professional property management, & more! Well run complex with quick access to Hwy 16, walking trails & Italian Centre! Come take a look!

Some photos virtually staged (id:6769)

Primary Bedroom 3.61 m X 4.13 m

Bedroom 2 3.51 m X 3.03 m

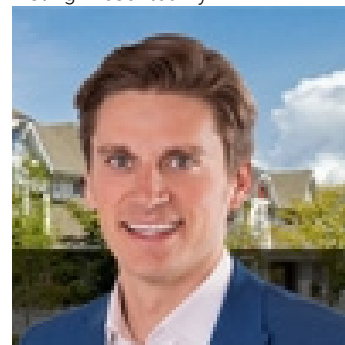
Bedroom 3 3.32 m X 3.82 m

Living room 5.1 m X 4.86 m

Dining room 6.37 m X 2.6 m

Kitchen 4.02 m X 2.68 m

Listing Presented By:



Originally Listed by:
RE/MAX Elite

<http://kevindoyle.remax.ca/>



Royal

Le Page Noralta Spruce Grove

#230, 70 Mcleod Ave , Spruce Grove, AB,

Phone: 780-920-0550

Fax:

tyson@royallepage.ca

The property information on this website is derived from the Canadian Real Estate Association's Data Distribution Facility (DDF®). DDF® references real estate listings held by various brokerage firms and franchisees. The accuracy of information is not guaranteed and should be independently verified. The trademarks REALTOR®, REALTORS® and the REALTOR® logo are controlled by The Canadian Real Estate Association (CREA) and identify real estate professionals who are members of CREA. The trademarks MLS®, Multiple Listing Service® and the associated logos are owned by CREA and identify the quality of services provided by real estate professionals who are members of CREA.