



Sherwood Park Alberta

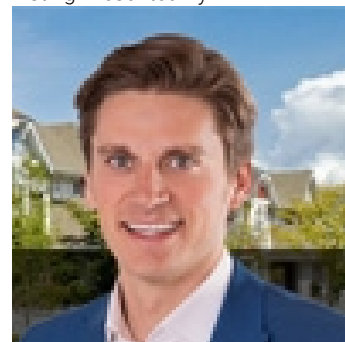
\$399,800

Welcome to Maplegrove! This 4 bedroom bungalow on an enormous 60'x120' lot in the heart of Sherwood park, conveniently located walking distance to great schools, and sherwood Heights Park, with quick access to Wye Rd and so many amazing amenities close by! With just about 1200 Sq Ft above ground PLUS and additional 1033 Sq Ft in the basement, you'll find this great starter family home is one you can grow into very nicely. The exterior has upgrades like brand new shingles, paint, a front porch that is the perfect place to sit and have your coffee or tea and decorate with flowers. The massive front driveway can easily fit 6 cars, and leads to the single attached garage. Now if you're looking for a backyard you can really run around in, with space to play, garden, and host your friends, you will LOVE this yard! This home has seen numerous updated and improvements over the years like flooring, paint, light fixtures, windows, and the start of basement renovations, so you can move in and enjoy right away! (id:6769)

Bedroom 4 Measurements not available
Family room Measurements not available
Living room Measurements not available
Dining room Measurements not available

Kitchen Measurements not available
Primary Bedroom Measurements not available
Bedroom 2 Measurements not available
Bedroom 3 Measurements not available

Listing Presented By:



Originally Listed by:
RE/MAX Elite

<http://www.eddydambrosio.com/>



Royal

Le Page Noralta Spruce Grove

#230, 70 Mcleod Ave , Spruce Grove, AB,

Phone: 780-920-0550
Fax:
tyson@royallepage.ca

The property information on this website is derived from the Canadian Real Estate Association's Data Distribution Facility (DDF®). DDF® references real estate listings held by various brokerage firms and franchisees. The accuracy of information is not guaranteed and should be independently verified. The trademarks REALTOR®, REALTORS® and the REALTOR® logo are controlled by The Canadian Real Estate Association (CREA) and identify real estate professionals who are members of CREA. The trademarks MLS®, Multiple Listing Service® and the associated logos are owned by CREA and identify the quality of services provided by real estate professionals who are members of CREA.