



Sherwood Park Alberta

\$774,900

Step into refined living in this beautiful 2-storey home in the heart of Summerwood. Thoughtfully designed space, this property blends modern luxury with everyday comfort. The main level features engineered hardwood, detailed wainscoting, and a sunlit living room with a paneled feature wall and gas fireplace. The kitchen is loaded with granite countertops, tall painted cabinets, Zephyr hood fan, Smart fridge, induction stove, and a butler's pantry finished to the same high standard. Upstairs, enjoy a bonus room with a second fireplace, 2 large bedrooms, and a stunning primary suite with wood accent wall, 5-piece ensuite offering heated floors, jetted tub, and a custom walk-in shower. The fully finished basement features 9' ceilings, office space, 2 additional bedrooms and a 4-piece bathroom. Additional highlights include built-in speaker system, A/C, central VAC, and irrigation system. This home is turn-key and perfectly located near parks, schools, trails, and amenities. A must see! (id:6769)

Bedroom 4 3.04 m X 2.91 m

Bedroom 5 4.95 m X 2.83 m

Office 2.25 m X 2.57 m

Utility room 4.94 m X 4.37 m

Recreation room 3.94 m X 4.54 m

Living room 4.48 m X 4.78 m

Dining room 3.16 m X 4.84 m

Kitchen 4.22 m X 4.12 m

Mud room 2.48 m X 1.65 m

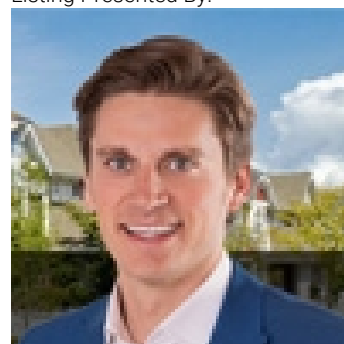
Family room 4.28 m X 4.07 m

Primary Bedroom 3.85 m X 5.68 m

Bedroom 2 4.27 m X 4.74 m

Bedroom 3 3.26 m X 5.02 m

Listing Presented By:



Originally Listed by:
RE/MAX Elite

<http://www.johnmattiello.com/>



Royal

Le Page Noralta Spruce Grove

#230, 70 Mcleod Ave , Spruce
Grove, AB,

Phone: 780-920-0550

Fax:

tyson@royallepage.ca

The property information on this website is derived from the Canadian Real Estate Association's Data Distribution Facility (DDF®). DDF® references real estate listings held by various brokerage firms and franchisees. The accuracy of information is not guaranteed and should be independently verified. The trademarks REALTOR®, REALTORS® and the REALTOR® logo are controlled by The Canadian Real Estate Association (CREA) and identify real estate professionals who are members of CREA. The trademarks MLS®, Multiple Listing Service® and the associated logos are owned by CREA and identify the quality of services provided by real estate professionals who are members of CREA.