



Fort Saskatchewan Alberta

\$355,000

Ana starts her day in the kitchen, the open layout allowing her to chat with her kids at the table while they eat breakfast before a SHORT WALK TO SCHOOL. She says goodbye & heads for errands at the nearby shopping center, then parks in the SINGLE CAR GARAGE when she gets home to load up the NEWER DISHWASHER. Most evenings, they play at the nearby park or in the WEST FACING BACKYARD, where they can relax after busy days. When it's time for bed, the kids run barefoot down the NEWLY CARPETED hall to settle into their comfortable bedrooms, and she tosses a load of laundry into the stackable washer tucked conveniently on the 2nd floor. Ana heads down the hall to her spacious primary suite, admiring all of her clothes in her WALK-IN CLOSET, then heads to her private ENSUITE for a bath before hopping into the king sized bed for bed. Downstairs, the unfinished basement has become her partner's latest project - transforming it in to their dream basement. At night, everyone rests well thanks to the CENTRAL A/C. (id:6769)

Living room 4.4 m X 2.92 m

Dining room 3.04 m X 2.9 m

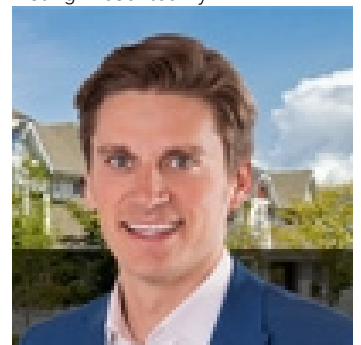
Kitchen 3.65 m X 3.53 m

Primary Bedroom 3.39 m X 4.85 m

Bedroom 2 2.9 m X 3.42 m

Bedroom 3 2.81 m X 3.34 m

Listing Presented By:



Originally Listed by:
MaxWell Devonshire Realty

<https://www.keriharstad.com/>



Royal
Le Page Noralta Spruce Grove

#230, 70 Mcleod Ave , Spruce Grove, AB,

Phone: 780-920-0550
Fax:
tyson@royalpage.ca

The property information on this website is derived from the Canadian Real Estate Association's Data Distribution Facility (DDF®). DDF® references real estate listings held by various brokerage firms and franchisees. The accuracy of information is not guaranteed and should be independently verified. The trademarks REALTOR®, REALTORS® and the REALTOR® logo are controlled by The Canadian Real Estate Association (CREA) and identify real estate professionals who are members of CREA. The trademarks MLS®, Multiple Listing Service® and the associated logos are owned by CREA and identify the quality of services provided by real estate professionals who are members of CREA.