

Edmonton Alberta

\$1,595,000

Extremely private and spectacular location adjacent to Edmonton's River Valley. This elegant 1900+ sqft classic brick, walkout bungalow is sitting upon a close to 12,000 sqft (0.273 of an acre) lot in highly sought after Laurier Heights. This property presents the opportunity for a fresh revitalization/redevelopment on one of the most extraordinary and breathtaking locations in the city. Very rarely does an opportunity like this present itself in such a prestigious neighborhood! (id:6769)

Living room 4.98 m X 6.75 m

Dining room 4.23 m X 2.76 m

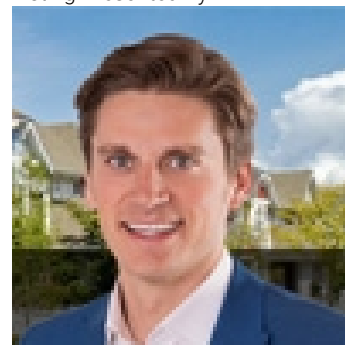
Kitchen 3.9 m X 2.71 m

Family room 3.33 m X 7.77 m

Primary Bedroom 4.29 m X 3.9 m

Bedroom 2 3.22 m X 4.24 m

Listing Presented By:



Originally Listed by:
RE/MAX Elite

<http://ryanlauber.com/>



Royal

Le Page Noralta Spruce Grove

#230, 70 Mcleod Ave , Spruce
Grove, AB,

Phone: 780-920-0550

Fax:

tyson@royallepage.ca

The property information on this website is derived from the Canadian Real Estate Association's Data Distribution Facility (DDF®). DDF® references real estate listings held by various brokerage firms and franchisees. The accuracy of information is not guaranteed and should be independently verified. The trademarks REALTOR®, REALTORS® and the REALTOR® logo are controlled by The Canadian Real Estate Association (CREA) and identify real estate professionals who are members of CREA. The trademarks MLS®, Multiple Listing Service® and the associated logos are owned by CREA and identify the quality of services provided by real estate professionals who are members of CREA.