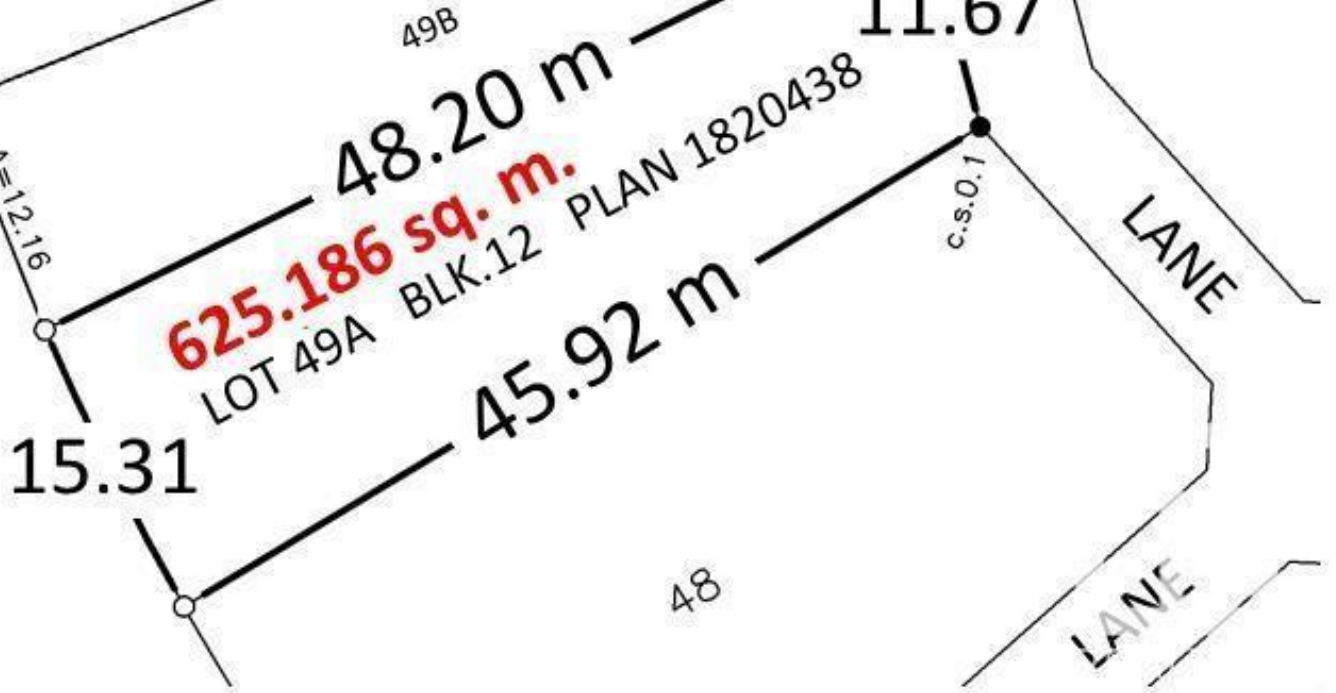




**8307 SASKATCHEWAN DRIVE**  
**50.2 FEET FRONTAGE**  
**158 FEET LONGEST SIDE**  
**38.2 FEET AT LANEWAY**  
**6726 sq.ft.**



## Edmonton Alberta

\$777,000

Please price-compare: 625 sq.m., 6726 sq.ft., 50-foot front, 38-foot lane way access. Build a 38 ft. wide 3-storey home and a triple garage. Best Southwest sunset view on Saskatchewan Drive. Because you are directly across from Irene's Lookout you see the whole River Valley from your new second and third floors. Serviced lot is cleared and flat - no demolition required. Motivated seller. (id:6769)

Listing Presented By:



Originally Listed by:  
RE/MAX Elite



CREA

DDF

#230, 70 Mcleod Ave , Spruce Grove, AB,

Phone: 780-920-0550  
tyson@royallepage.ca