



Edmonton Alberta

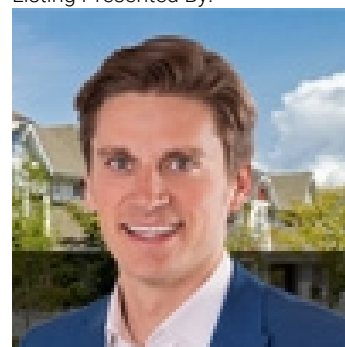
\$950,000

Windsor Park, Once in a lifetime opportunity for builders, developers, or any investor to redevelop on this incredible approximately 75' x 135' home site. Situated in the heart of Windsor park, across the street from a small but stunning greenspace site and quiet crescent, and surrounded by numerous substantially built estates, 120 St is a spectacular destination for discerning families looking to bring their family to one of Edmonton's top 5 neighbourhoods. Living next to Edmonton's River Valley provides daily access to amazing trails for biking, hiking, and walking. Those looking to live within close proximity of the UofA hospital / campus, and also just a short commute into Edmonton's growing downtown centre are going to jump at this rare opportunity to build their dream home on this property. Potential exists here to build a substantial home on this enormous lot, or look at subdividing and building two, or build one and sell the other half of the lot. Amazing possibilities for those with the vision! (id:6769)

Living room Measurements not available
Dining room Measurements not available
Kitchen Measurements not available
Family room Measurements not available

Primary Bedroom Measurements not available
Bedroom 2 Measurements not available
Bedroom 3 Measurements not available

Listing Presented By:



Originally Listed by:
RE/MAX Elite

<http://www.eddydambrosio.com/>



Royal

Le Page Noralta Spruce Grove

#230, 70 Mcleod Ave , Spruce Grove, AB,

Phone: 780-920-0550
Fax:
tyson@royallepage.ca

The property information on this website is derived from the Canadian Real Estate Association's Data Distribution Facility (DDF®). DDF® references real estate listings held by various brokerage firms and franchisees. The accuracy of information is not guaranteed and should be independently verified. The trademarks REALTOR®, REALTORS® and the REALTOR® logo are controlled by The Canadian Real Estate Association (CREA) and identify real estate professionals who are members of CREA. The trademarks MLS®, Multiple Listing Service® and the associated logos are owned by CREA and identify the quality of services provided by real estate professionals who are members of CREA.