



## Edmonton Alberta

\$395,000

Charming Original Owner Home in North Edmonton! Welcome to 8527 134A Avenue -- a well-loved and meticulously maintained bungalow located on a quiet, mature street. This original owner home offers over 1,071 sq ft of comfortable living space on main floor featuring 3 spacious bedrooms, a bright living room with a large picture window, dedicated dining area, and a 4-piece main bathroom. The fully finished basement includes a 4th bedroom, a 2-piece bathroom, generous storage areas, and a separate back entrance, offering suite potential or multi-generational living. Enjoy the beautifully landscaped and fenced yard with a large deck - perfect for summer BBQs and family gatherings. A double detached garage (23.6x21.6) and long-standing pride of ownership complete the package. Located close to schools, parks, shopping, and public transit, this is a fantastic opportunity to own a solid, well-cared-for home in a great community. (id:6769)

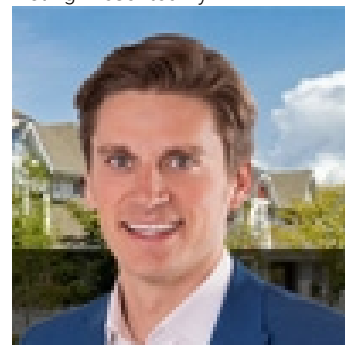
Bedroom 4 Measurements not available

Bedroom 2 Measurements not available

Primary Bedroom Measurements not available

Bedroom 3 Measurements not available

Listing Presented By:



Originally Listed by:  
RE/MAX Elite

<https://www.sergiosells.ca/>



**Royal**

**Le Page Noralta Spruce Grove**

#230, 70 Mcleod Ave , Spruce Grove, AB,

Phone: 780-920-0550

Fax:

[tyson@royalpage.ca](mailto:tyson@royalpage.ca)

The property information on this website is derived from the Canadian Real Estate Association's Data Distribution Facility (DDF®). DDF® references real estate listings held by various brokerage firms and franchisees. The accuracy of information is not guaranteed and should be independently verified. The trademarks REALTOR®, REALTORS® and the REALTOR® logo are controlled by The Canadian Real Estate Association (CREA) and identify real estate professionals who are members of CREA. The trademarks MLS®, Multiple Listing Service® and the associated logos are owned by CREA and identify the quality of services provided by real estate professionals who are members of CREA.