



Fort Saskatchewan Alberta

\$449,900

Welcome to the highly sought-after Pineview neighborhood! This beautifully updated 3-bedroom bungalow offers a modern and inviting main floor with a spacious living room that boasts large windows, allowing natural light to flood the space. The updated kitchen is the heart of the home, perfect for cooking and entertaining. Down the hall, you'll find a back entrance with built-in storage, a well-maintained 4-piece bathroom, and three cozy bedrooms. The basement is unfinished, providing plenty of potential for customization. Situated on a large corner lot, this property also features an attached garage for convenience. With the added comfort of central air conditioning, this home is perfect for enjoying year-round comfort. Whether you're relaxing indoors or enjoying the outdoor space, this home offers the perfect blend of modern updates and charm in a desirable location. Don't miss your chance to make this wonderful property yours! (id:6769)

Living room 5.35 m X 3.26 m

Dining room 3.86 m X 1.75 m

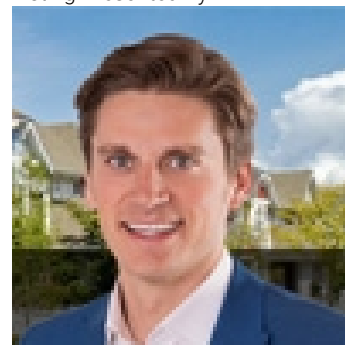
Kitchen 6.6 m X 3.45 m

Primary Bedroom 4.46 m X 3.16 m

Bedroom 2 3.41 m X 3.22 m

Bedroom 3 2.72 m X 2.72 m

Listing Presented By:



Originally Listed by:
RE/MAX Real Estate

<http://www.tomlowe.ca/>



CREA

DDF

#230, 70 Mcleod Ave , Spruce
Grove, AB,

Phone: 780-920-0550
tyson@royallepage.ca

The property information on this website is derived from the Canadian Real Estate Association's Data Distribution Facility (DDF®). DDF® references real estate listings held by various brokerage firms and franchisees. The accuracy of information is not guaranteed and should be independently verified. The trademarks REALTOR®, REALTORS® and the REALTOR® logo are controlled by The Canadian Real Estate Association (CREA) and identify real estate professionals who are members of CREA. The trademarks MLS®, Multiple Listing Service® and the associated logos are owned by CREA and identify the quality of services provided by real estate professionals who are members of CREA.