



## Edmonton Alberta

\$719,000

This upscale 2.5-storey home in Bonnie Doon, nestled near River Valley trails, downtown, the LRT line, Muttart Gardens, golf course, and trendy cafes/restaurants, exudes convenience and charm. Its sun-drenched open-concept main floor, boasting large windows, showcases a chef's dream kitchen with a waterfall island and high-end appliances. Upstairs, discover 3 spacious bedrooms, a 4P Ensuite, laundry, and a Full Bath. The top-floor loft impresses with a 2P bath, versatile open living space, and a balcony offering stunning Downtown skyline views. The fully self-contained basement, with a separate entrance, 1 bedroom, laundry, and kitchen bar, presents endless opportunities! Crafted with quality and attention to detail, this residence offers comfortable and stylish living at its finest. (id:6769)

Bedroom 4 2.94 m X 5.21 m

Laundry room Measurements not available

Recreation room 5.2 m X 3.18 m

Living room 3.64 m X 4.51 m

Dining room 3.07 m X 3.81 m

Kitchen 3.8 m X 4.77 m

Primary Bedroom 4.13 m X 3.93 m

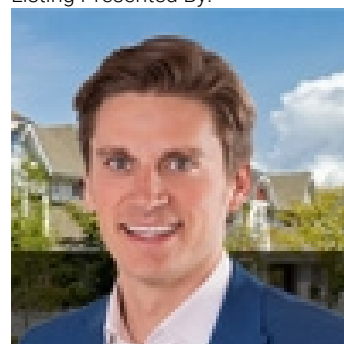
Bedroom 2 2.98 m X 2.75 m

Bedroom 3 2.98 m X 2.75 m

Laundry room 1.51 m X 1.83 m

Loft 4.35 m X 6.13 m

Listing Presented By:



Originally Listed by:  
RE/MAX Elite

<http://www.realtyedmonton.ca/>



CREA

DDF

#230, 70 Mcleod Ave , Spruce  
Grove, AB,

Phone: 780-920-0550  
tyson@royallepage.ca

The property information on this website is derived from the Canadian Real Estate Association's Data Distribution Facility (DDF®). DDF® references real estate listings held by various brokerage firms and franchisees. The accuracy of information is not guaranteed and should be independently verified. The trademarks REALTOR®, REALTORS® and the REALTOR® logo are controlled by The Canadian Real Estate Association (CREA) and identify real estate professionals who are members of CREA. The trademarks MLS®, Multiple Listing Service® and the associated logos are owned by CREA and identify the quality of services provided by real estate professionals who are members of CREA.