



Edmonton Alberta

\$499,900

Limitless opportunities await with this AMAZING 771m², pie shaped lot facing green space in the beautiful Bonnie Doon neighbourhood! The main floor has a spacious living room with large picture window and bright galley style kitchen with breakfast nook, 2 large bedrooms and full bath. The lower level has a second kitchen, family room and large bedroom and bathroom. The south facing back yard is fully fenced, is super private and offers plenty of space for large garden, fire pit and entertainment space. The oversized double garage (32x20 feet) completes this package. Move in and enjoy the space, or re-develop and take advantage of the RS-Small Scale zoning. Close to shopping, downtown, University, Mill Creek Ravine, Whyte Ave, the river valley and LRT. (id:6769)

Bedroom 3 4.03 m X 4.04 m

Second Kitchen 3.33 m X 3.59 m

Recreation room 3.4 m X 4.3 m

Utility room 2.38 m X 4.36 m

Living room 4.18 m X 5.52 m

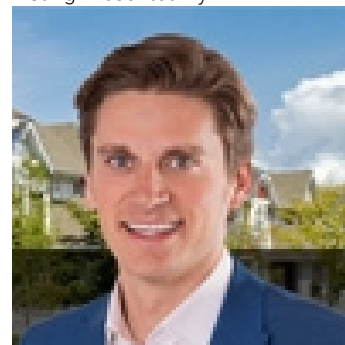
Dining room 2.54 m X 2.45 m

Kitchen 2.46 m X 2.91 m

Primary Bedroom 3.58 m X 3.84 m

Bedroom 2 3.48 m X 2.77 m

Listing Presented By:



Originally Listed by:
Royal LePage Prestige Realty



CREA

DDF

#230, 70 Mcleod Ave , Spruce Grove, AB,

Phone: 780-920-0550
tyson@royallepage.ca

The property information on this website is derived from the Canadian Real Estate Association's Data Distribution Facility (DDF®). DDF® references real estate listings held by various brokerage firms and franchisees. The accuracy of information is not guaranteed and should be independently verified. The trademarks REALTOR®, REALTORS® and the REALTOR® logo are controlled by The Canadian Real Estate Association (CREA) and identify real estate professionals who are members of CREA. The trademarks MLS®, Multiple Listing Service® and the associated logos are owned by CREA and identify the quality of services provided by real estate professionals who are members of CREA.