



Rural Parkland County Alberta

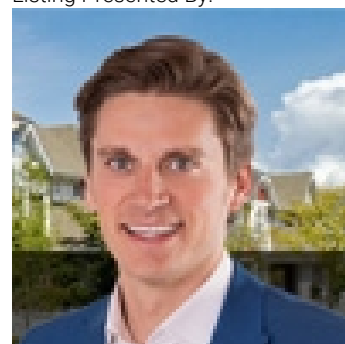
\$949,900

WOW!! Best subdivision in Parkland County. This gorgeous executive bungalow with 2.12 acres is situated with VIEWS OF LAKES - FRONT AND BACK! 1820 sq. ft. of luxury with an open floor plan, floor to ceiling windows for best views, two bedrooms on main, den, dining room, and living room with views. Contemporary kitchen offers quartz countertops, large island with sink, high-end appliances, walk-in pantry AND coffee station. Dining room is ideally situated to see views of nature from every angle. Large primary bedroom with 5 piece spa-like ensuite and walk-in closet. Large 2nd bedroom and main floor den. Fully dvpd basement has large recreation room with bar, 2 large bedrooms and 4 piece bathroom. FOUR CAR ATTACHED GARAGE. Room to park RV Yard is a retreat backing onto trees and lake. Ideally located near Chickadoo Recreation Area, Stony Plain, and major highways. Stunning home only 1 year old with elegant luxury and surrounded by nature! (id:6769)

Family room 7.16 m X 11.24 m
 Bedroom 3 5.42 m X 3.72 m
 Bedroom 4 4.85 m X 3.72 m
 Utility room 4.86 m X 4.27 m
 Utility room 4.86 m X 4.27 m
 Other 2.23 m X 2.13 m
 Living room 4.92 m X 4.83 m

Dining room 4.03 m X 3.34 m
 Kitchen 6.27 m X 3.18 m
 Den 3.85 m X 3.65 m
 Primary Bedroom 6.1 m X 3.67 m
 Bedroom 2 4.07 m X 3.66 m
 Laundry room 2.62 m X 3.23 m

Listing Presented By:



Originally Listed by:
 RE/MAX Elite

<http://www.sharonryan.ca/>



Royal

Le Page Noralta Spruce Grove

#230, 70 Mcleod Ave , Spruce Grove, AB,

Phone: 780-920-0550
 Fax:
 tyson@royallepage.ca

The property information on this website is derived from the Canadian Real Estate Association's Data Distribution Facility (DDF®). DDF® references real estate listings held by various brokerage firms and franchisees. The accuracy of information is not guaranteed and should be independently verified. The trademarks REALTOR®, REALTORS® and the REALTOR® logo are controlled by The Canadian Real Estate Association (CREA) and identify real estate professionals who are members of CREA. The trademarks MLS®, Multiple Listing Service® and the associated logos are owned by CREA and identify the quality of services provided by real estate professionals who are members of CREA.