



Fort Saskatchewan Alberta

\$684,900

Spectrum Homes proudly presents this UPGRADED 2 storey WALKOUT home located in the sought after new community of South Fort SOUTH FACING REAR YARD, BACKING THE POND & WALKING TRAILS! This 2,200 sqft home has spared no expense offering an open concept layout, Den/Office with 2 piece bath on main. Mudroom w/ bench & storage, walk through pantry w/ butlers pantry on one side. Chef inspired kitchen boasting 2 tone cabinetry 36 gas stove, built in oven & microwave, garbage pull out, under cabinet lighting, Quartz countertops, wine/beverage cooler & large waterfall island w/bar seating! Good sized dining rm leading to rear deck, spacious living rm w/ FIREPLACE! Upstairs offers 3 big bdrm's, 2 full washrms, BONUS rm w/ fireplace & laundry rm w/ cabinets & sink! 2nd & 3rd bedroom w/ WIC's! GORGEOUS primary suite complete w/ feature wall, 5 pc ensuite bath, deep soaker tub & HUGE WIC! Upgrades include Triple pane windows, cabinetry, lighting & Plumbing! (id:6769)

Living room 16 m X 13 m

Dining room 10 m X 12 m

Kitchen 12.6 m X 12 m

Den 10.8 m X 9.6 m

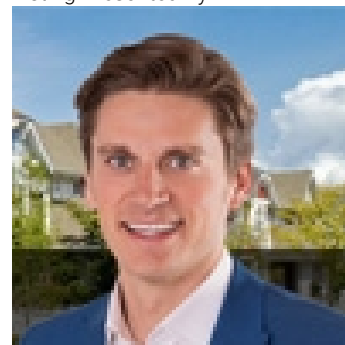
Primary Bedroom 14 m X 12 m

Bedroom 2 12.9 m X 9.4 m

Bedroom 3 12.9 m X 9.4 m

Bonus Room 11.7 m X 14.8 m

Listing Presented By:



Originally Listed by:
MaxWell Polaris

<http://forsale.eg.com/>



CREA

DDF

#230, 70 Mcleod Ave , Spruce
Grove, AB,

Phone: 780-920-0550
tyson@royallepage.ca

The property information on this website is derived from the Canadian Real Estate Association's Data Distribution Facility (DDF®). DDF® references real estate listings held by various brokerage firms and franchisees. The accuracy of information is not guaranteed and should be independently verified. The trademarks REALTOR®, REALTORS® and the REALTOR® logo are controlled by The Canadian Real Estate Association (CREA) and identify real estate professionals who are members of CREA. The trademarks MLS®, Multiple Listing Service® and the associated logos are owned by CREA and identify the quality of services provided by real estate professionals who are members of CREA.