



## Fort Saskatchewan Alberta

\$599,000

Welcome to the Kayzlee by Alquinn Homes, a stunning two-story residence offering modern design and thoughtful features. The main floor welcomes you with an open-concept layout, seamlessly connecting the spacious living area with a striking fireplace to the gourmet kitchen boasting a large island and walk-through mudroom to the pantry from the double attached garage. A versatile bedroom completes the main floor, offering flexibility for guests or a home office. Upstairs, a cozy loft/bonus room awaits, alongside the convenience of an upper-floor laundry room. The primary bedroom is a luxurious retreat with a 5-piece ensuite and walk-in closet, complemented by two additional bedrooms, a bathroom, and a study. The exterior side entrance leads to the undeveloped basement, providing plenty of options for future developments. Experience comfort, functionality, and elegance in the Kayzlee. \*Photos are representative. (id:6769)

Dining room 3.35 m X 3.07 m

Kitchen 3.81 m X 3.56 m

Bedroom 4 2.74 m X 2.82 m

Great room 3.66 m X 4.93 m

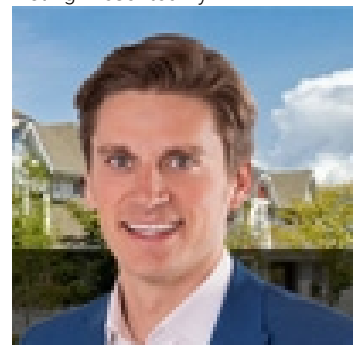
Primary Bedroom 3.89 m X 4.32 m

Bedroom 2 2.84 m X 3.38 m

Bedroom 3 2.87 m X 3.38 m

Loft 3 m X 3.81 m

Listing Presented By:



Originally Listed by:  
Bode



CREA

DDF

#230, 70 Mcleod Ave , Spruce  
Grove, AB,

Phone: 780-920-0550  
tyson@royallepage.ca

The property information on this website is derived from the Canadian Real Estate Association's Data Distribution Facility (DDF®). DDF® references real estate listings held by various brokerage firms and franchisees. The accuracy of information is not guaranteed and should be independently verified. The trademarks REALTOR®, REALTORS® and the REALTOR® logo are controlled by The Canadian Real Estate Association (CREA) and identify real estate professionals who are members of CREA. The trademarks MLS®, Multiple Listing Service® and the associated logos are owned by CREA and identify the quality of services provided by real estate professionals who are members of CREA.