



Edmonton Alberta

\$230,000

Great location! Steps to Grandin LRT Station and the River Valley. Quick and easy access to Downtown shopping, schools, and U of A. 803 sq. ft. lovely two bedrooms and two baths condo unit with convenient insuite laundry and storage room. Bright and open living room and dining room. Patio door access to the West facing balcony with great view. Spacious U-shaped kitchen with extended eating bar and ample cabinets. Primary bedroom has 3 pcs. ensuite. Condo fees include all utilities. One assigned underground parking stall. (id:6769)

Living room 3.7 m X 2.72 m

Dining room 4.15 m X 2.02 m

Kitchen 2.91 m X 2.84 m

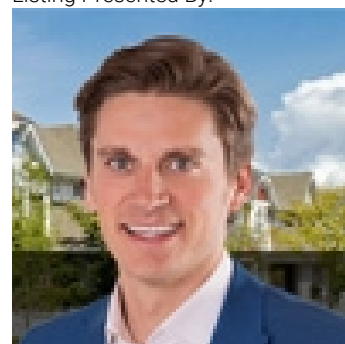
Primary Bedroom 3.29 m X 3.24 m

Bedroom 2 3.4 m X 2.68 m

Laundry room Measurements not available

Storage Measurements not available

Listing Presented By:



Originally Listed by:
RE/MAX River City

<http://www.simonchong.com/>



Royal

Le Page Noralta Spruce Grove

#230, 70 Mcleod Ave , Spruce Grove, AB,

Phone: 780-920-0550

Fax:

tyson@royalpage.ca

The property information on this website is derived from the Canadian Real Estate Association's Data Distribution Facility (DDF®). DDF® references real estate listings held by various brokerage firms and franchisees. The accuracy of information is not guaranteed and should be independently verified. The trademarks REALTOR®, REALTORS® and the REALTOR® logo are controlled by The Canadian Real Estate Association (CREA) and identify real estate professionals who are members of CREA. The trademarks MLS®, Multiple Listing Service® and the associated logos are owned by CREA and identify the quality of services provided by real estate professionals who are members of CREA.