



## Beaumont Alberta

\$472,500

Quick Possession Available! This charming, original owner home features 1700 sqft of well maintained living space & a functional layout. It is also situated on a quiet crescent just off a busy road with extra crescent parking! Entering, the cozy gas fireplace in the living room creates a warm and inviting atmosphere combining with open concept living throughout the main floor. Upstairs, one will find 3 generously sized bedrooms, each with large closets for ample storage including the primary bedroom that is equipped with a 3-pc ensuite! The basement is unfinished & awaiting the new owners imagination. The long driveway easily accommodates a trailer, adding to the home's practical appeal. The spacious 21.5 ft by 22 ft garage offers additional room for vehicles or projects. New roof within the past 5 years! Composite decking, walk in pantry, quality built by Homexx Homes. (id:6769)

Living room Measurements not available

Dining room Measurements not available

Kitchen Measurements not available

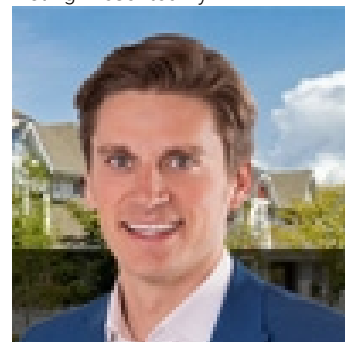
Primary Bedroom Measurements not available

Bedroom 2 Measurements not available

Bedroom 3 Measurements not available

Laundry room Measurements not available

Listing Presented By:



Originally Listed by:  
RE/MAX Elite



CREA

DDF

#230, 70 Mcleod Ave , Spruce Grove, AB,

Phone: 780-920-0550  
tyson@royallepage.ca

The property information on this website is derived from the Canadian Real Estate Association's Data Distribution Facility (DDF®). DDF® references real estate listings held by various brokerage firms and franchisees. The accuracy of information is not guaranteed and should be independently verified. The trademarks REALTOR®, REALTORS® and the REALTOR® logo are controlled by The Canadian Real Estate Association (CREA) and identify real estate professionals who are members of CREA. The trademarks MLS®, Multiple Listing Service® and the associated logos are owned by CREA and identify the quality of services provided by real estate professionals who are members of CREA.