



Edmonton Alberta

\$549,900

TRIPLE GARAGE with drive through door to side yard! Nestled in the vibrant and family friendly neighbourhood of Chapelle, this lovely home comes with 3 bedrooms on the upper level plus a bonus room and a total of 2.5 bathrooms. An open concept main floor with hardwood floors and granite counter tops. A dining area that leads to the south facing yard. The kitchen boasts stainless steel appliances, an island with raised eating bar, glass tile backsplash and a corner pantry. From the triple garage there is a SEPERATE ENTRANCE which leads to the unfinished basement and is roughed in for a 2nd kitchen and laundry, perfect for future development of a secondary suite. Surrounded by quality schools, peaceful parks & easy access to public transit. (id:6769)

Living room 3.72 m X 4.81 m

Dining room 3.19 m X 2.53 m

Kitchen 3.19 m X 3.48 m

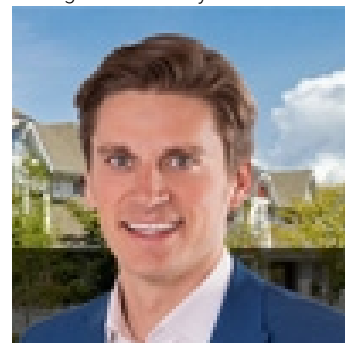
Primary Bedroom 3.62 m X 4.48 m

Bedroom 2 3.19 m X 3.18 m

Bedroom 3 2.97 m X 3.33 m

Bonus Room 4.66 m X 4.09 m

Listing Presented By:



Originally Listed by:
RE/MAX Elite

<http://www.ynottony.ca/>



**Royal
Le Page Noralta Spruce Grove**

#230, 70 Mcleod Ave , Spruce
Grove, AB,

Phone: 780-920-0550

Fax:

tyson@royallepage.ca

The property information on this website is derived from the Canadian Real Estate Association's Data Distribution Facility (DDF®). DDF® references real estate listings held by various brokerage firms and franchisees. The accuracy of information is not guaranteed and should be independently verified. The trademarks REALTOR®, REALTORS® and the REALTOR® logo are controlled by The Canadian Real Estate Association (CREA) and identify real estate professionals who are members of CREA. The trademarks MLS®, Multiple Listing Service® and the associated logos are owned by CREA and identify the quality of services provided by real estate professionals who are members of CREA.