



Edmonton Alberta

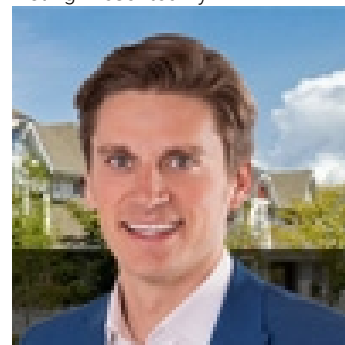
\$464,900

NO CONDO FEES!! This 4-level townhouse is nestled in the prestigious community of Cloverdale. Step into warmth, gleaming hardwood floors, high ceilings and 2560 sq ft of spacious living areas. The main level unveils a gourmet kitchen, adorned with modern appliances, premium finishes, and large dining seating for 12, perfect entertaining guests. Offering 4 bedrooms and 3.5 baths strategically placed throughout the home. The primary suite, situated on its private level, features an en-suite bathroom and private deck with panoramic views of the surrounding beauty. There is plenty of room for the entire family with a bonus room on the 2nd level. The sleek design offers high-end fixtures, vaulted ceilings and modern color tones. Situated just steps away from parks and trails, and Edmonton Ski Club, this townhouse provides a seamless connection to nature. Residents can easily embrace and active lifestyle enjoying the outdoor and serene walk in the nearby green spaces. NO CONDO FEES! (id:6769)

Bedroom 3 5.1 m X 4.69 m
Bedroom 4 3.72 m X 2.38 m
Living room 4.31 m X 3.43 m
Dining room 3.84 m X 3.43 m
Kitchen 4 m X 3.42 m

Primary Bedroom 5.84 m X 3.61 m
Bedroom 2 4.28 m X 3.87 m
Bonus Room 4.51 m X 3.61 m
Laundry room 2.43 m X 1.97 m

Listing Presented By:



Originally Listed by:
RE/MAX Elite

<https://nancystratton.com/>



CREA

DDF

#230, 70 Mcleod Ave , Spruce
Grove, AB,

Phone: 780-920-0550
tyson@royallepage.ca

The property information on this website is derived from the Canadian Real Estate Association's Data Distribution Facility (DDF®). DDF® references real estate listings held by various brokerage firms and franchisees. The accuracy of information is not guaranteed and should be independently verified. The trademarks REALTOR®, REALTORS® and the REALTOR® logo are controlled by The Canadian Real Estate Association (CREA) and identify real estate professionals who are members of CREA. The trademarks MLS®, Multiple Listing Service® and the associated logos are owned by CREA and identify the quality of services provided by real estate professionals who are members of CREA.