



## Edmonton Alberta

\$969,900

Tucked away in a quiet cul-de-sac in sought after Country Club Estates, this spacious 2-storey offers over 2800 sq ft of beautifully maintained living space-and a triple garage with extra parking! From the moment you step inside, you will love the natural light that fills the home and gleams off the hardwood floors that run throughout. The main floor features a front office plus a large flex room that can be used as a guest suite or gym (heavy-duty mats stay).Upstairs all 3 bedrooms include walk-in closets. the second and third bedrooms share a Jack and Jill ensuite .While the main bedroom ensuite has an steam shower. The fully finished basement offer a second kitchen, a wine cellar and tons of space for entertaining. Enjoy outdoor living on the large deck that back directly onto Oleskiw Park-an incredibly private and peaceful setting. (id:6769)

Second Kitchen 6.32 m X 3.31 m

Recreation room 10.88 m X 7.98 m

Living room 5.94 m X 4.25 m

Dining room 2.82 m X 3.83 m

Kitchen 5.48 m X 3.94 m

Office 2.6 m X 3.95 m

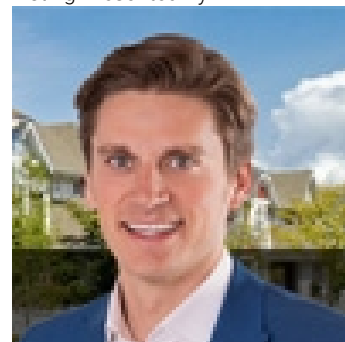
Laundry room 2.73 m X 2.1 m

Primary Bedroom 6.23 m X 4.31 m

Bedroom 2 3.89 m X 4.41 m

Bedroom 3 4.43 m X 3.57 m

Listing Presented By:



Originally Listed by:  
RE/MAX Elite

<https://wilsonlamsells.com/>



**Royal  
Le Page Noralta Spruce Grove**

#230, 70 Mcleod Ave , Spruce  
Grove, AB,

Phone: 780-920-0550  
Fax:  
[tyson@royallepage.ca](mailto:tyson@royallepage.ca)

The property information on this website is derived from the Canadian Real Estate Association's Data Distribution Facility (DDF®). DDF® references real estate listings held by various brokerage firms and franchisees. The accuracy of information is not guaranteed and should be independently verified. The trademarks REALTOR®, REALTORS® and the REALTOR® logo are controlled by The Canadian Real Estate Association (CREA) and identify real estate professionals who are members of CREA. The trademarks MLS®, Multiple Listing Service® and the associated logos are owned by CREA and identify the quality of services provided by real estate professionals who are members of CREA.