



Edmonton Alberta

\$749,500

Welcome to 9441-101 St, your 2300 sq ft dream 2 bedroom, 3 bath home nestled in the charming community of Rosssdale, right in the heart of downtown Edmonton. This carefully crafted home features a one of a kind design by the renowned architect Art Nystad, ensuring a distinctive and stylish living space and stands out as a true work of art among its neighbors. The thoughtfully designed interior of this home maximizes both comfort and functionality with an upper loft creating an office/flex/yoga space. The main floor has vaulted ceilings, loads of natural light streaming in, making it bright and inviting. The lower level hosts the primary suite with ensuite and 2nd bedroom. The location offers the best of both worlds, you'll relish the vibrant downtown lifestyle, with easy access to the city's bustling attractions, entertainment venues and dining hotspots as well as gorgeous hiking trails, river valley, golf and parks. (id:6769)

Primary Bedroom 3.71 m X 3.53 m

Bedroom 2 3.6 m X 3.2 m

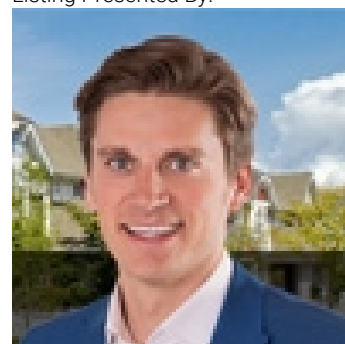
Living room 7.28 m X 4.97 m

Dining room 7.28 m X 4.97 m

Kitchen 4.4 m X 2.27 m

Loft 7.31 m X 5.24 m

Listing Presented By:



Originally Listed by:
RE/MAX Elite

<https://nancystratton.com/>



CREA

DDF

#230, 70 Mcleod Ave , Spruce
Grove, AB,

Phone: 780-920-0550
tyson@royallepage.ca

The property information on this website is derived from the Canadian Real Estate Association's Data Distribution Facility (DDF®). DDF® references real estate listings held by various brokerage firms and franchisees. The accuracy of information is not guaranteed and should be independently verified. The trademarks REALTOR®, REALTORS® and the REALTOR® logo are controlled by The Canadian Real Estate Association (CREA) and identify real estate professionals who are members of CREA. The trademarks MLS®, Multiple Listing Service® and the associated logos are owned by CREA and identify the quality of services provided by real estate professionals who are members of CREA.