



## Fort Saskatchewan Alberta

\$619,000

Welcome to your LUXURY house in the desirable South Fort neighborhood of Fort Saskatchewan. This stunning, CUSTOM-BUILT house offers 4 spacious bedrooms and 3 full bathrooms, perfect for families of all sizes. As you step inside, you'll be greeted by an impressive open-to-above concept that fills the home with natural light and a sense of grandeur. The heart of this home is its modern kitchen, featuring elegant quartz countertops. The electric fireplace and thoughtfully designed feature walls add a cozy and stylish touch to your living experience. With a main floor bedroom and bath, this home provides convenience and flexibility for guests or multi-generational living. Upstairs, you'll find a spacious bonus room, perfect for a OFFICE space, playroom, or additional living space. Situated on a Rectangular LOT and backing onto a serene WALKING TRAIL, this property offers both privacy and beautiful views. (id:6769)

Living room 3.96 m X 5.82 m

Dining room 4.13 m X 2.41 m

Kitchen 4.14 m X 4.59 m

Bedroom 4 3.66 m X 2.94 m

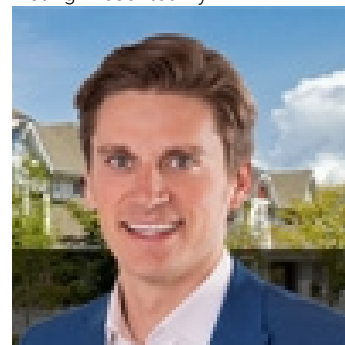
Primary Bedroom 4.36 m X 4.93 m

Bedroom 2 3.31 m X 3.66 m

Bedroom 3 3.26 m X 4.97 m

Bonus Room 4.76 m X 6.7 m

Listing Presented By:



Originally Listed by:  
Exp Realty



CREA

DDF

#230, 70 Mcleod Ave , Spruce Grove, AB,

Phone: 780-920-0550  
tyson@royallepage.ca

The property information on this website is derived from the Canadian Real Estate Association's Data Distribution Facility (DDF®). DDF® references real estate listings held by various brokerage firms and franchisees. The accuracy of information is not guaranteed and should be independently verified. The trademarks REALTOR®, REALTORS® and the REALTOR® logo are controlled by The Canadian Real Estate Association (CREA) and identify real estate professionals who are members of CREA. The trademarks MLS®, Multiple Listing Service® and the associated logos are owned by CREA and identify the quality of services provided by real estate professionals who are members of CREA.