



Edmonton Alberta

\$669,000

Wonderful family neighbourhood close to the serene setting of the river valley with wilderness trails offering nature walks in summer & cross country skiing in winter. QUIET STREET with only local traffic. Just a short walk to Catholic & Public elementary schools, bus service connecting with LRT to U of A & downtown, near shopping in Riverbend Square, Terwillegar Recreation Centre & easy access to Terwillegar & Anthony Henday Dr. The large treed SW facing yard offers a PEACEFUL setting in which to relax while the children play. Spacious living room & dining room, kitchen with breakfast nook, family room with gas fireplace & patio doors opening onto the patio, 2 pce guest bath & direct access to the double attached garage. The curved staircase leads to the FOUR BEDROOMS UPSTAIRS, 4 pce ensuite & a 4 pce family bath. The basement is ready for future development. Newer triple pane windows (2020/21) shingles (2020), eavestroughs (2021) This is the ideal home to update & make it your family's 'forever' home. (id:6769)

Living room 5.89 m X 3.94 m

Dining room 4.57 m X 3.65 m

Kitchen 3.23 m X 2.7 m

Family room 5.3 m X 3.72 m

Breakfast 3.74 m X 2.35 m

Laundry room 1.95 m X 3.72 m

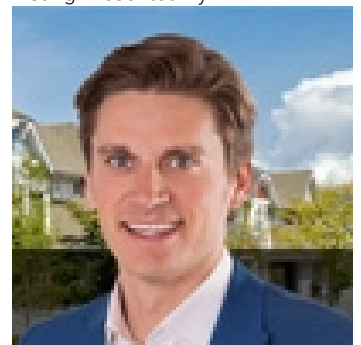
Primary Bedroom 4.25 m X 4.39 m

Bedroom 2 3.35 m X 3.35 m

Bedroom 3 4.06 m X 3.35 m

Bedroom 4 2.88 m X 3.66 m

Listing Presented By:



Originally Listed by:
RE/MAX Elite

<http://www.anndawrant.com/>



Royal

Le Page Noralta Spruce Grove

#230, 70 Mcleod Ave , Spruce Grove, AB,

Phone: 780-920-0550

Fax:

tyson@royallepage.ca

The property information on this website is derived from the Canadian Real Estate Association's Data Distribution Facility (DDF®). DDF® references real estate listings held by various brokerage firms and franchisees. The accuracy of information is not guaranteed and should be independently verified. The trademarks REALTOR®, REALTORS® and the REALTOR® logo are controlled by The Canadian Real Estate Association (CREA) and identify real estate professionals who are members of CREA. The trademarks MLS®, Multiple Listing Service® and the associated logos are owned by CREA and identify the quality of services provided by real estate professionals who are members of CREA.