



Fort Saskatchewan Alberta

\$240,000

Opportunity knocks! This half duplex bungalow has great bones, no condo fees, and a separate/side entrance with Secondary Suite potential. The upper level features a generous living room, Large eat-in kitchen, 3 Spacious Bedrooms and a full 4-piece bathroom with newer tub and tile--all are ready for your personal touches. The lower level has 2 more bedrooms, recreation space, a second 4 pc bathroom and a second kitchen. The laundry (newer washer/dryer) is ideally located in shared space on the lower level. With newer windows and the shingles (2023) already done, it's a great fit for a first-time buyer, young family, or investor looking to build equity. Located in a quiet, family-friendly area close to parks, schools, and all the essentials. A solid opportunity with tons of potential. (id:6769)

Bedroom 4 Measurements not available

Bedroom 5 Measurements not available

Second Kitchen Measurements not available

Living room Measurements not available

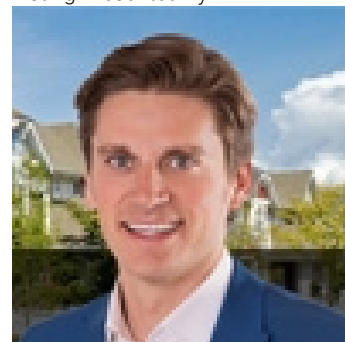
Kitchen Measurements not available

Primary Bedroom Measurements not available

Bedroom 2 Measurements not available

Bedroom 3 Measurements not available

Listing Presented By:



Originally Listed by:
Royal LePage Noralta Real Estate



**Royal
Le Page Noralta Spruce Grove**

#230, 70 Mcleod Ave , Spruce
Grove, AB,

Phone: 780-920-0550

Fax:

tyson@royallepage.ca

The property information on this website is derived from the Canadian Real Estate Association's Data Distribution Facility (DDF®). DDF® references real estate listings held by various brokerage firms and franchisees. The accuracy of information is not guaranteed and should be independently verified. The trademarks REALTOR®, REALTORS® and the REALTOR® logo are controlled by The Canadian Real Estate Association (CREA) and identify real estate professionals who are members of CREA. The trademarks MLS®, Multiple Listing Service® and the associated logos are owned by CREA and identify the quality of services provided by real estate professionals who are members of CREA.