



Edmonton Alberta

\$1,698,000

You will LOVE this gorgeous Craftsman style 2 sty /close to 5000 sf living space. Nestled on a tree lined street in EAST Crestwood, a stones throw from the river valley along Summit & Riverside Drive. Just repainted, this timeless home boasts quality finishes throughout. Main floor den & a massive great rm next to the formal dining area, perfect for those who love to entertain. Parties & family gatherings will gravitate to the Chef's kitchen featuring a huge island for a quick bite & prepping meals. Huge laundry/mudroom. 2 O/S bedrms for the kids, bonus rm & a wonderful retreat for the parents in the primary bedrm. Lower level is where the real fun happens w/a TV gaming area & wet bar. Exercise area for the hard core fitness buff, 2 bedrms & in floor heat. Private .23 acre mature treed yard for outdoor lovers- massive deck for chilling & BBQs. Lower fire pit patio. 2 huge driveways to park extra cars, doubles for hoops/hockey. 5 car tandem garage w/a 3 season loft, perfect studio or guy/gal cave. A GEM! (id:6769)

Family room 6.69 m X 5.32 m

Bedroom 4 4.04 m X 3.7 m

Bedroom 5 5 m X 4.79 m

Recreation room 9.48 m X 4.09 m

Living room 4.96 m X 6.6 m

Dining room 3.93 m X 4.41 m

Kitchen 5.29 m X 4.38 m

Den 3.48 m X 5.15 m

Laundry room 2.95 m X 3.47 m

Breakfast 4.6 m X 2.9 m

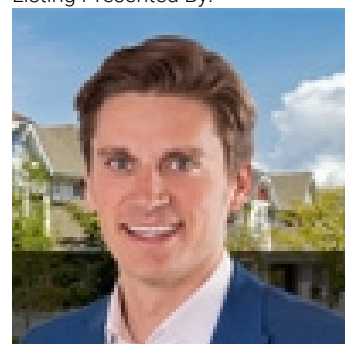
Primary Bedroom 5.08 m X 5.16 m

Bedroom 2 3.97 m X 4.29 m

Bedroom 3 3.2 m X 3.85 m

Bonus Room 4.54 m X 4.12 m

Listing Presented By:



Originally Listed by:
RE/MAX Elite

<http://www.alangee.com/>



CREA

DDF

#230, 70 Mcleod Ave , Spruce
Grove, AB,

Phone: 780-920-0550
tyson@royallepage.ca

The property information on this website is derived from the Canadian Real Estate Association's Data Distribution Facility (DDF®). DDF® references real estate listings held by various brokerage firms and franchisees. The accuracy of information is not guaranteed and should be independently verified. The trademarks REALTOR®, REALTORS® and the REALTOR® logo are controlled by The Canadian Real Estate Association (CREA) and identify real estate professionals who are members of CREA. The trademarks MLS®, Multiple Listing Service® and the associated logos are owned by CREA and identify the quality of services provided by real estate professionals who are members of CREA.