



Edmonton Alberta

\$779,900

Newly renovated 3 bedroom 2 storey with second kitchen in basement. Bright and open. New paint. High ceiling in foyer. Hardwood floor on main and stairways. Living room with electric fireplace. Open kitchen with new light fixtures, white cabinets, granite countertop, central island, walk in pantry and ceramic tiled floor. Dining area with patio door to sunroom. Upstairs featuring 3 bedrooms and 4 pcs bath. Primary bedroom with 5 pcs ensuite including jacuzzi and double sink. Basement has side door entry, 9 'H ceiling and fully finished with kitchen, 2 bedrooms, 4pcs bath and laundry room. Low maintenance backyard with large new deck New garage shingles. Some new metal siding, Hi efficiency furnace, newer hot water tank, 2 sets of washer & dryer, wall mounted air conditioning and concrete sidewalk. Great location in popular Richie neighborhood with close proximity to schools, bus, shops, ravine and easy access to U of A, Whyte Ave and downtown core. (id:6769)

Family room 3.56 m X 5.88 m

Bedroom 4 3.2 m X 3.34 m

Bedroom 5 3.26 m X 1.95 m

Second Kitchen 2.66 m X 2.66 m

Laundry room 1.51 m X 1.52 m

Living room 5.49 m X 4.96 m

Dining room 4.91 m X 3.13 m

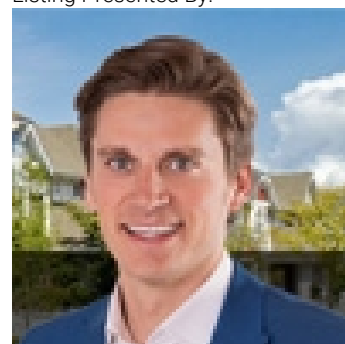
Kitchen 3.57 m X 4.16 m

Primary Bedroom 4.43 m X 4.91 m

Bedroom 2 4.18 m X 3.45 m

Bedroom 3 3.02 m X 3.06 m

Listing Presented By:



Originally Listed by:
RE/MAX Elite

<http://www.stephenyip.com/>



CREA

DDF

#230, 70 Mcleod Ave, Spruce Grove, AB,

Phone: 780-920-0550
tyson@royallepage.ca

The property information on this website is derived from the Canadian Real Estate Association's Data Distribution Facility (DDF®). DDF® references real estate listings held by various brokerage firms and franchisees. The accuracy of information is not guaranteed and should be independently verified. The trademarks REALTOR®, REALTORS® and the REALTOR® logo are controlled by The Canadian Real Estate Association (CREA) and identify real estate professionals who are members of CREA. The trademarks MLS®, Multiple Listing Service® and the associated logos are owned by CREA and identify the quality of services provided by real estate professionals who are members of CREA.