



Edmonton Alberta

\$573,000

Welcome to Cloverdale! This home sits on a fully fenced lot just steps from the river valley, ski hill, Muttart Conservatory & close to downtown. Presently home owners here get free tickets to the Folk Festival! This charming bungalow has had extensive renovations over the years. Modern, open style, with a sunny white kitchen, large living room & formal dining room, primary bedroom & updated bathroom (2022). The main floor has hardwood & ceramic tiles. The lower level has vinyl plank flooring & big windows. There are two bedrooms with custom built California Closets, gym/exercise area, bathroom with steam shower & utility/laundry room. Upgrades include oversize double garage (2009), windows, additional attic & exterior insulation, siding & bathrooms. Custom exterior entry doors (2021) metal roof on house & garage (2022/23), A/C unit (2021), HRV ventilation (2022), Ecobee thermostat (2022) high efficiency furnace & hot water tank. This is the perfect nest for newly weds. It's a winner! (id:6769)

Bedroom 2 3.67 m X 4.98 m

Bedroom 3 2.95 m X 3.7 m

Laundry room Measurements not available

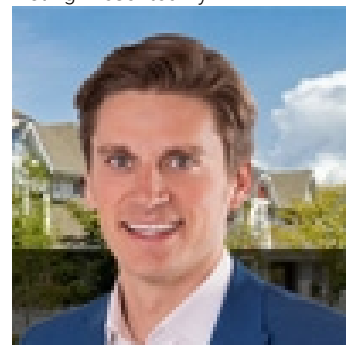
Living room 4.51 m X 5.07 m

Dining room 3.23 m X 3.23 m

Kitchen 2.81 m X 3.91 m

Primary Bedroom 2.93 m X 3.36 m

Listing Presented By:



Originally Listed by:
RE/MAX Elite

<http://www.anndawrant.com/>



**Royal
Le Page Noralta Spruce Grove**

#230, 70 Mcleod Ave , Spruce
Grove, AB,

Phone: 780-920-0550

Fax:

tyson@royallepage.ca

The property information on this website is derived from the Canadian Real Estate Association's Data Distribution Facility (DDF®). DDF® references real estate listings held by various brokerage firms and franchisees. The accuracy of information is not guaranteed and should be independently verified. The trademarks REALTOR®, REALTORS® and the REALTOR® logo are controlled by The Canadian Real Estate Association (CREA) and identify real estate professionals who are members of CREA. The trademarks MLS®, Multiple Listing Service® and the associated logos are owned by CREA and identify the quality of services provided by real estate professionals who are members of CREA.