



## Fort Saskatchewan Alberta

\$349,900

GREAT HOME ON A BIG LOT IN A WONDERFUL COMMUNITY! This 4 bedroom bungalow in the desirable community of Chamberlain has so much for you to enjoy including a sun soaked southwest facing yard that fully fenced and landscaped. Inside is 3 bedrooms up with a primary bedroom that includes 2 pc ensuite. Newer vinyl crank out windows allow the sunshine in to a bright kitchen and a spacious front living room. The fully finished basement has a huge family room and a 4th bedroom, a 3pc bathroom, plus lots of storage and a large laundry room. The Driveway leads to double wide pad in front of your oversized 22x24 double garage with a lean-to storage. Lots of room for your RV and still enjoy your private back yard. Just around the corner from James Mowat School, Mowat Park, Marion Rogers Park, and the river valley pathway. (id:6769)

Family room 7.88 m X 6.28 m

Den 1.71 m X 2.37 m

Bedroom 4 3.85 m X 5.17 m

Living room 6.05 m X 5.74 m

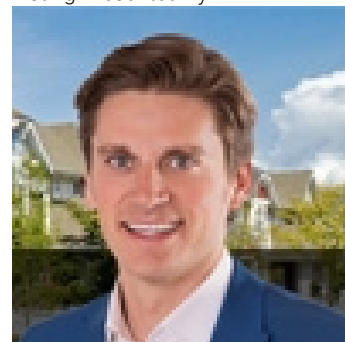
Kitchen 4.52 m X 4.01 m

Primary Bedroom 3.16 m X 4.1 m

Bedroom 2 3.46 m X 2.39 m

Bedroom 3 3.13 m X 3.53 m

Listing Presented By:



Originally Listed by:  
Royal LePage Noralta Real Estate

<http://brentkellington.com/>



**Royal**

**Le Page Noralta Spruce Grove**

#230, 70 Mcleod Ave , Spruce Grove, AB,

Phone: 780-920-0550

Fax:

[tyson@royallepage.ca](mailto:tyson@royallepage.ca)

The property information on this website is derived from the Canadian Real Estate Association's Data Distribution Facility (DDF®). DDF® references real estate listings held by various brokerage firms and franchisees. The accuracy of information is not guaranteed and should be independently verified. The trademarks REALTOR®, REALTORS® and the REALTOR® logo are controlled by The Canadian Real Estate Association (CREA) and identify real estate professionals who are members of CREA. The trademarks MLS®, Multiple Listing Service® and the associated logos are owned by CREA and identify the quality of services provided by real estate professionals who are members of CREA.