

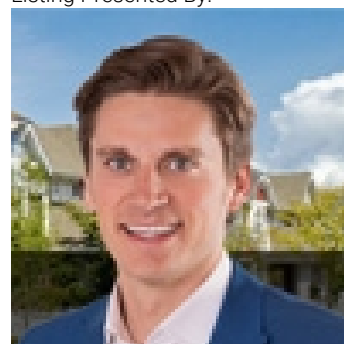


Rural Sturgeon County Alberta

\$1,600,000

Development opportunity* Located on the SW corner of section HWY 779 and Twp 544. The NW 24.54.1.W5-158 acre property was previously subdivided a number of years ago and have the ground work for interior roadway systems. NW 1/4 has access to rural services along Twp 544. The property can be accessed from Twp 544 to the north. The adjoining NE property is available as well, or both separate titles can be purchased together as a package. Prime opportunity for the savvy developer. Currently zoned agricultural. (id:6769)

Listing Presented By:



Originally Listed by:
RE/MAX PREFERRED CHOICE

<http://www.jenniferlindavis.com>



CREA

DDF

#230, 70 Mcleod Ave , Spruce
Grove, AB,

Phone: 780-920-0550
tyson@royallepage.ca

The property information on this website is derived from the Canadian Real Estate Association's Data Distribution Facility (DDF®). DDF® references real estate listings held by various brokerage firms and franchisees. The accuracy of information is not guaranteed and should be independently verified. The trademarks REALTOR®, REALTORS® and the REALTOR® logo are controlled by The Canadian Real Estate Association (CREA) and identify real estate professionals who are members of CREA. The trademarks MLS®, Multiple Listing Service® and the associated logos are owned by CREA and identify the quality of services provided by real estate professionals who are members of CREA.