



## Edmonton Alberta

\$550,000

RARE OPPORTUNITY... EXCEPTIONAL PANORAMIC VIEWS from this 2000 sqft PENTHOUSE. To begin, the views are nothing short of spectacular. Situated on the south west corner of the building you get unobstructed sweeping views, unlike any other, of the river & river valley. The large, partially covered, patio capitalizes on these views, not too mention so many vantage points from inside the unit, with stunning views from almost every room. With its ample size you feel like you are in a bungalow in the sky... starting with a proper entry, a hall to the large living room & adjacent formal dining area, which leads to the kitchen with dinette. Down the hall the other way you have 3 good sized bedrooms, the primary is complete with a 3 piece ensuite & W/I closet. Another full bathroom & proper laundry room to complete the unit. Updates include kitchen, flooring & paint throughout approx 10 yrs ago, bathrooms & laundry just a few yrs ago. Lovingly cared for by the same owner for the last 44 years. Double parking stall. (id:6769)

Living room 8 m X 6.16 m

Dining room 3.91 m X 3.36 m

Kitchen 3.89 m X 2.46 m

Primary Bedroom 4.99 m X 3.8 m

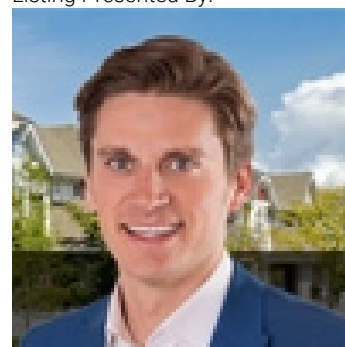
Bedroom 2 5.49 m X 3.65 m

Bedroom 3 3.3 m X 3.25 m

Breakfast 3.29 m X 2.9 m

Laundry room 1.89 m X 1.74 m

Listing Presented By:



Originally Listed by:  
RE/MAX Elite

<http://www.gillianismyagent.com/>



CREA

DDF

#230, 70 Mcleod Ave , Spruce  
Grove, AB,

Phone: 780-920-0550  
tyson@royallepage.ca

The property information on this website is derived from the Canadian Real Estate Association's Data Distribution Facility (DDF®). DDF® references real estate listings held by various brokerage firms and franchisees. The accuracy of information is not guaranteed and should be independently verified. The trademarks REALTOR®, REALTORS® and the REALTOR® logo are controlled by The Canadian Real Estate Association (CREA) and identify real estate professionals who are members of CREA. The trademarks MLS®, Multiple Listing Service® and the associated logos are owned by CREA and identify the quality of services provided by real estate professionals who are members of CREA.