

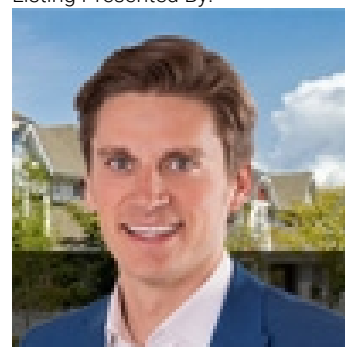


## Rural Leduc County Alberta

\$649,000

WOW! If you are looking for a beautiful property to build your ESTATE HOME, HOBBY FARM, or simply enjoy the great outdoors till you decide, look no further than this wonderful 11 ACRE PARCEL of land with AMAZING PLANTED TREES, some pasture/hay & pavement to the door all just 6 minutes from Beaumont. Just south of FRESHLY PAVED, Township Road 510, and located on Range Road 233, or also accessible from the South on Nisku Road (Highway 625). SCHOOL BUS TO THE DOOR for transportation from both the Black Gold & Star Catholic school systems in BEAUMONT. 15 minutes to Sherwood Park, 15 minutes to South Common and 15 minutes to the Edmonton International Airport, what a beautiful piece of land in a great location! Current ZONING IS AGRICULTURE/COUNTRY RESIDENTIAL/TRANSITIONAL as the RR 233 has numerous Country Residential subdivisions already on it, so the possibilities are endless! As long as the hay on the land is being cut, or the land is being utilized agriculturally, then agricultural taxes will be assessed. (id:6769)

Listing Presented By:



Originally Listed by:  
RE/MAX Elite

<http://www.horsepowerranch.com/>



CREA

DDF

#230, 70 Mcleod Ave , Spruce  
Grove, AB,

Phone: 780-920-0550  
tyson@royallepage.ca

The property information on this website is derived from the Canadian Real Estate Association's Data Distribution Facility (DDF®). DDF® references real estate listings held by various brokerage firms and franchisees. The accuracy of information is not guaranteed and should be independently verified. The trademarks REALTOR®, REALTORS® and the REALTOR® logo are controlled by The Canadian Real Estate Association (CREA) and identify real estate professionals who are members of CREA. The trademarks MLS®, Multiple Listing Service® and the associated logos are owned by CREA and identify the quality of services provided by real estate professionals who are members of CREA.