

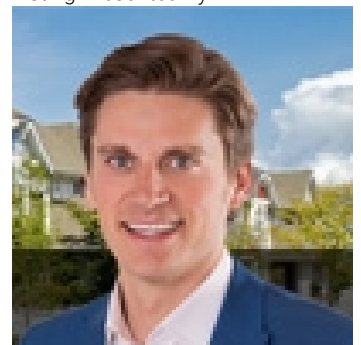


Edmonton Alberta

\$2,600

Stunning, newly constructed bi-level home offering over 1800 sqft. of modern open concept living with cathedral ceiling! Corner lot offers loads of windows flooding the main floor with plenty of light. Enjoy contemporary sleek design with high end finishes throughout. Your gourmet kitchen includes a gas stove, built-in microwave and a large island. The main level also offers 3 good size bedrooms including a second master bedroom with its own ensuite and access to the deck. There is also an additional 4-piece bath to share with the 2nd and 3rd bedrooms and a stackable washer and dryer. Upper-level offers a large master bedroom with a walk-in closet and a luxurious 5-piece master ensuite with a jetted jacuzzi tub, a double vanity and a separate shower. Enjoy the benefits of a double attached garage and additional parking for a corner lot. Located in a peaceful, family-friendly neighborhood, this bi-level home is close to schools, parks, shopping, and major highways for easy commuting. (id:6769)

Listing Presented By:



Originally Listed by:
RE/MAX Elite

<http://www.janettesellshomes.ca/>



CREA

DDF

#230, 70 Mcleod Ave , Spruce
Grove, AB,

Phone: 780-920-0550
tyson@royallepage.ca

The property information on this website is derived from the Canadian Real Estate Association's Data Distribution Facility (DDF®). DDF® references real estate listings held by various brokerage firms and franchisees. The accuracy of information is not guaranteed and should be independently verified. The trademarks REALTOR®, REALTORS® and the REALTOR® logo are controlled by The Canadian Real Estate Association (CREA) and identify real estate professionals who are members of CREA. The trademarks MLS®, Multiple Listing Service® and the associated logos are owned by CREA and identify the quality of services provided by real estate professionals who are members of CREA.